

# Controlled. Tactile. Compression.

CLAW<sup>®</sup> II

Polyaxial Compression Plating System





**Wright Medical Technology, Inc.**

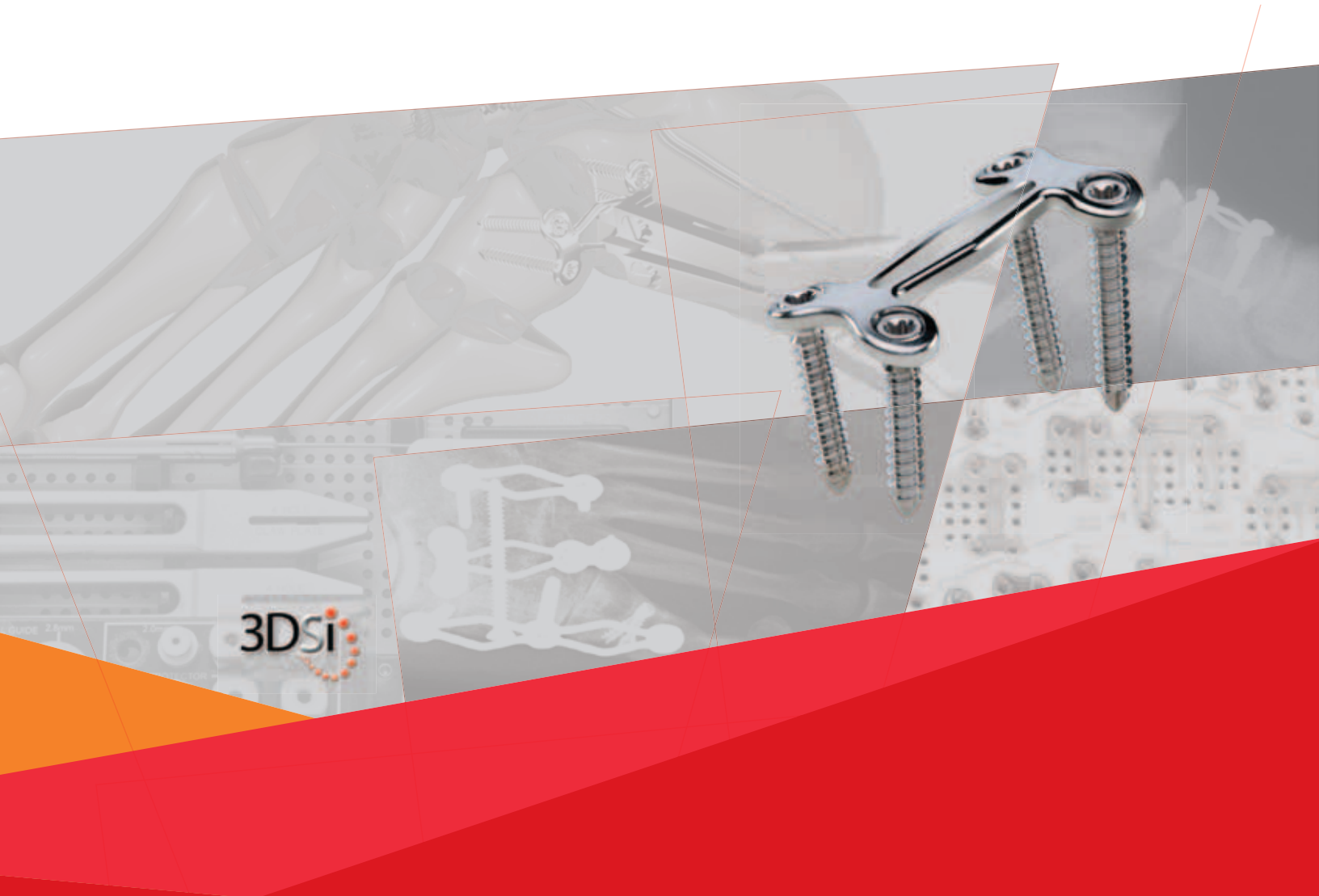
1023 Cherry Road  
Memphis, TN 38117  
800 238 7117  
901 867 9971  
[www.wmt.com](http://www.wmt.com)

**Wright Medical EMEA**

Atlas Arena, Australia Building  
Hoogoorddreef 7  
1101 BA Amsterdam  
the Netherlands  
011 31 20 565 9060

# CLAW<sup>®</sup> II

## Polyaxial Compression Plating System



3DSi

 **WRIGHT**<sup>™</sup>

Dynamic CLAW® II plates facilitate controlled compression techniques, while minimizing the number of required instruments and procedural steps.



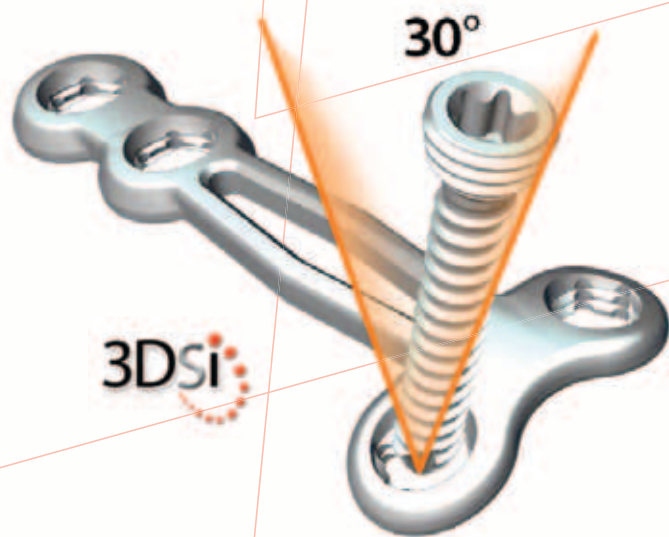
## Locked Compression

### Maximize Construct Stability

All plate holes mechanically couple with threaded locking screw heads, creating a unified construct designed to resist angular forces and maintain interfragmentary contact.

### Facilitate Bony Apposition

Locking screws maintain fixed trajectories during compression maneuvers and are designed to facilitate even compression across the joint.

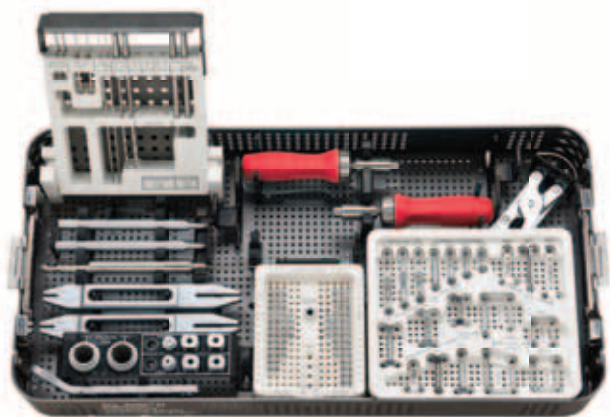


## Customized Fixation

### Adapt to Anatomical Variations

Every CLAW® II screw hole accepts either a 2.7 or 3.5mm polyaxial locking screw, providing customized screw configurations and trajectories for every patient.

Address forefoot, midfoot and hindfoot indications with one system, one tray and multiple implant options



### CLAW® II Instrumentation

- Color-coding streamlines intraoperative use
- Self-retaining drivers ease screw insertion
- Threaded plate tacks provide provisional fixation and lag plate to bone



Image courtesy of Gregory C. Berlet, MD

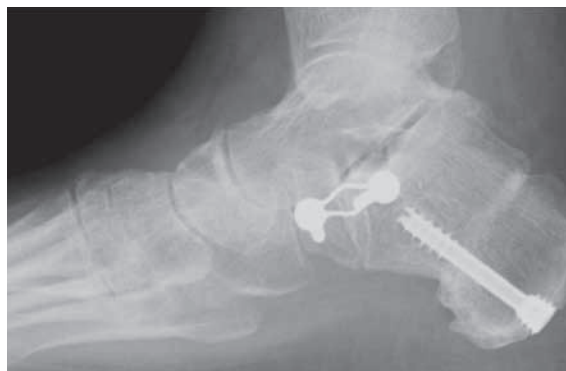


Image courtesy of Robert B. Anderson, MD



Image courtesy of Philip Basile, DPM

4-Hole Plate



2-Hole Plate



T-Plates



### Nitrogen Strengthened Stainless Steel

CLAW® II screws feature a nitrogen strengthened stainless steel design, incorporating substantially higher fatigue strength characteristics than the standard surgical grade stainless steel.

<sup>1</sup>Referenced data contained in ASTM standards F138 (316L Stainless Steel) and F2229 (Nitrogen Strengthened Stainless Steel)

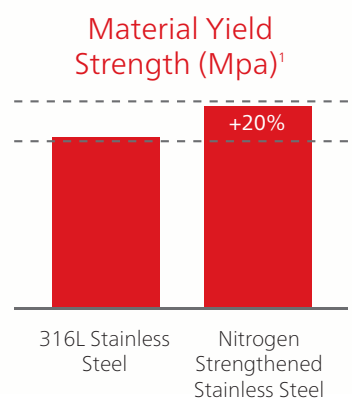


Image courtesy of Carroll P. Jones, MD

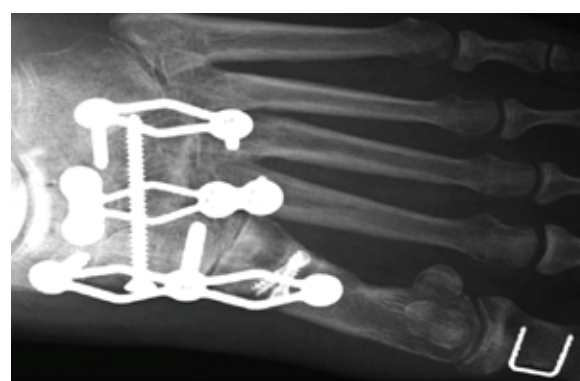


Image courtesy of Carroll P. Jones, MD



U-Plate



Series-Plate

